

# 2 Bed Home

## 2 BED EN-SUITE & GUEST WC

### UNIT INFO:

- Stand size: 10x20.5m = 205m<sup>2</sup>
- 2 Bed En-Suite + Guest wc
- Double Garage
- Braai, patio and garden
- Double storey

### AREAS:

#### Ground Floor:

Dwelling enclosed = 90.0m<sup>2</sup>  
 Patio undercover area = 11.9m<sup>2</sup>

### First Floor:

Dwelling enclosed = 60.4m<sup>2</sup>  
 Balcony = 13.0m<sup>2</sup>

**TOTAL = 175.3m<sup>2</sup>**

### OTHER:

Patio pergola area = 6.8m<sup>2</sup>  
 Entrance pergola area = 11.5m<sup>2</sup>

**GRAND TOTAL: = 193.6m<sup>2</sup>**



GROUND FLOOR PLAN



FIRST FLOOR PLAN

# 3 Bed Home A

## 3 BED EN-SUITE & GUEST WC

### UNIT INFO:

- Stand size: 10x20.5m = 205m<sup>2</sup>
- 3 Bed En-Suite + Guest wc
- Double Garage
- Braai, patio and garden
- Double storey

### AREAS:

#### Ground Floor:

Dwelling enclosed. = 89.9m<sup>2</sup>  
 Patio undercover area = 11.4m<sup>2</sup>

### First Floor:

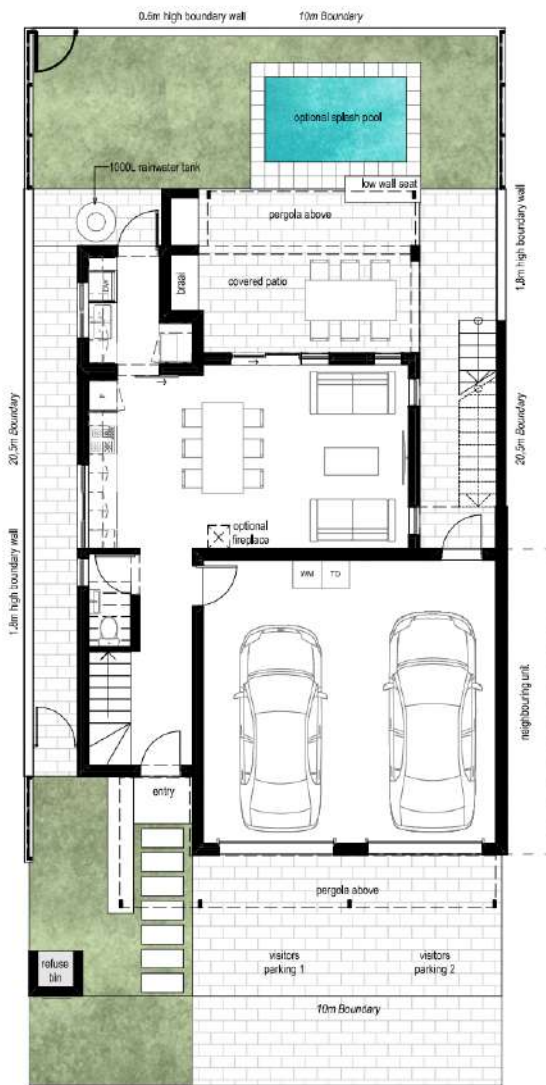
Dwelling enclosed = 78.8 m<sup>2</sup>  
 Balcony 1 = 12.4 m<sup>2</sup>  
 Balcony 2 = 2.6 m<sup>2</sup>

**TOTAL = 195.1m<sup>2</sup>**

### OTHER:

Patio pergola area. = 6.6m<sup>2</sup>  
 Entrance pergola area = 11.5m<sup>2</sup>  
 External staircase = 3.2m<sup>2</sup>

**GRAND TOTAL = 217.0m<sup>2</sup>**



GROUND FLOOR PLAN



FIRST FLOOR PLAN

# 3 Bed Home B

## 3 BED, 1 EN-SUITE, + BATH & GUEST WC

### UNIT INFO:

- Stand size: 10x20.5m = 205m<sup>2</sup>
- 3 Bed + 1 En-Suite, + Bath & Guest wc
- Double Garage
- Braai, patio and garden
- Double storey

### AREAS:

#### Ground Floor:

Dwelling enclosed = 101.6m<sup>2</sup>  
 Patio undercover area = 14.0m<sup>2</sup>

### First Floor:

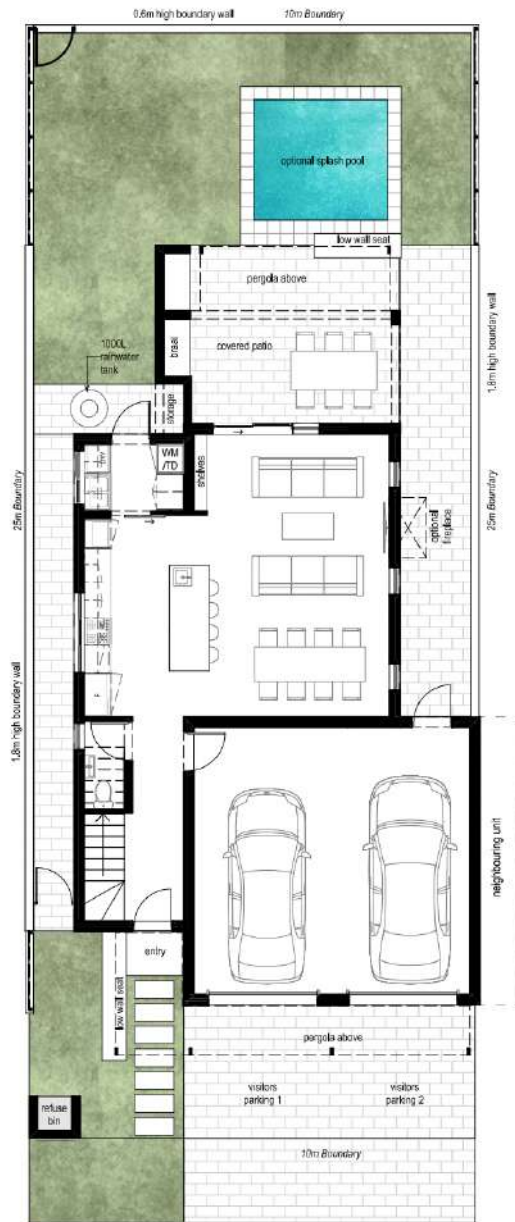
Dwelling enclosed. = 75.7m<sup>2</sup>  
 Balcony = 13.7m<sup>2</sup>

**TOTAL = 205.0m<sup>2</sup>**

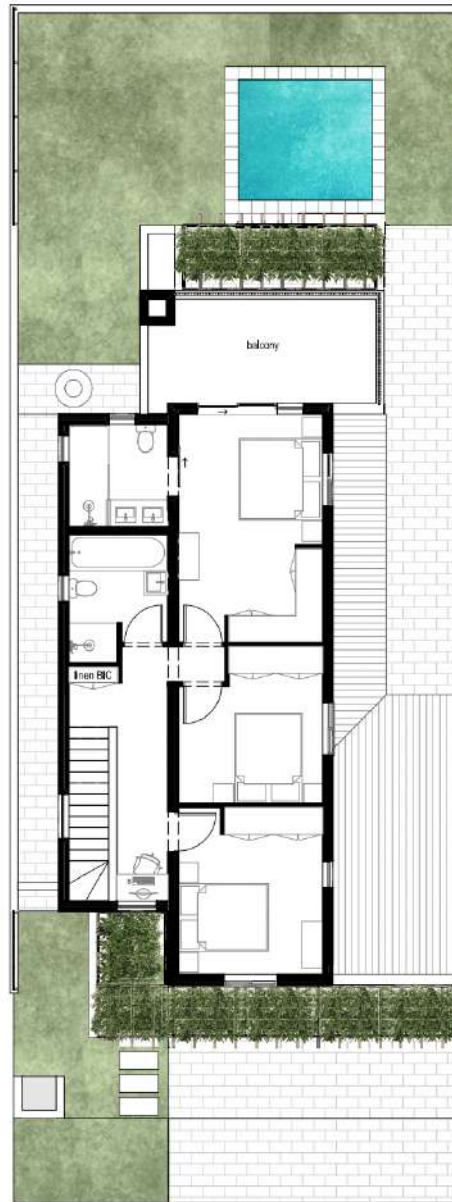
### OTHER:

Patio pergola area = 8.0m<sup>2</sup>  
 Entrance pergola area = 11.5m<sup>2</sup>

**GRAND TOTAL: = 224.5m<sup>2</sup>**



GROUND FLOOR PLAN



FIRST FLOOR PLAN

# 4 Bed Home

## 4 BED, 2 EN-SUITE, + BATH & GUEST WC

### UNIT INFO:

- Stand size: 10x20.5m = 250m<sup>2</sup>
- 4 Bed + 1 En-Suite, + Bath & Guest wc
- Double Garage
- Braai, patio and garden
- Double storey

### AREAS:

#### Ground Floor:

Dwelling enclosed. = 100.5m<sup>2</sup>  
 Patio undercover area = 13.6m<sup>2</sup>

### First Floor:

Dwelling enclosed = 94.1m<sup>2</sup>  
 Balcony 1 = 13.2m<sup>2</sup>  
 Balcony 2 = 2.5m<sup>2</sup>

**TOTAL = 223.9m<sup>2</sup>**

### OTHER:

Patio pergola area. = 7.7m<sup>2</sup>  
 Entrance pergola area = 11.5m<sup>2</sup>  
 External staircase = 3.2m<sup>2</sup>

**GRAND TOTAL. = 246.3m<sup>2</sup>**



GROUND FLOOR PLAN



FIRST FLOOR PLAN